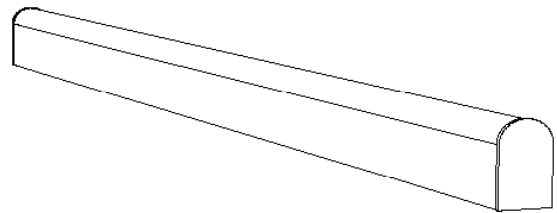
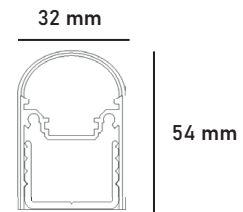
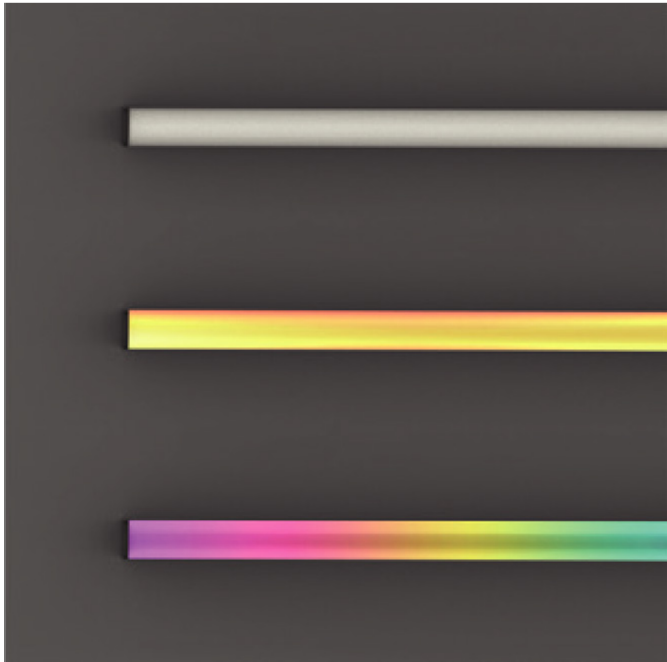
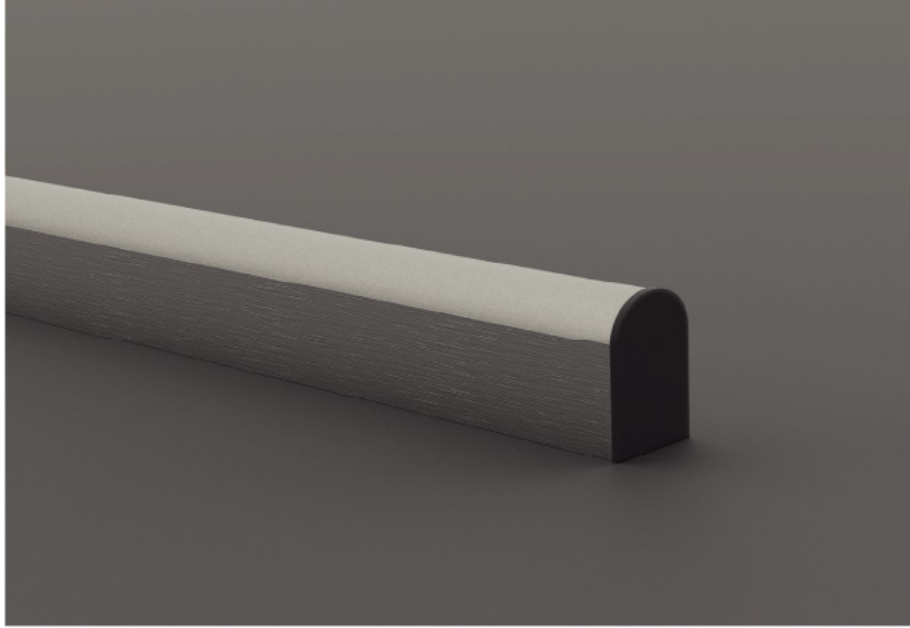


DRW-Line M

Lineer





Specification

Hz	50 - 60
Lm	1300
RI	120°
°C	-20° / +60°
Body:	Die-cast aluminium
IK:	> 9
IP:	67
Initial chromaticity:	MacAdam 3
Lifetime:	100.000 h / Im80
Electrical Protection Class:	2
Efficiency:	> 0.95
Warranty:	3 years

Product Cod	Control Type	Power	Luminous Flux	CRI	Light Color	Led Count	Voltage
DRW-Line M	on-off/DALI	4,8-18W	W/130LM	90	WW-NW-CW	90	24
DRW-Line M	on-off/DALI	4,8-12W	-	-	AMBER	90	24
DRW-Line M	Invert-PWM	4,8-12W	-	-	RGB	48	24
DRW-Line M	SPI-DMX	10W	-	-	RGB-DMX-SPI	48	24

Body Color

-  Ral xxxx
-  Ral 9006